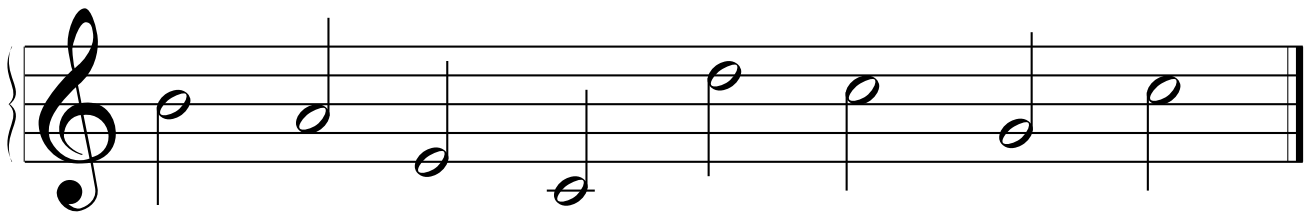
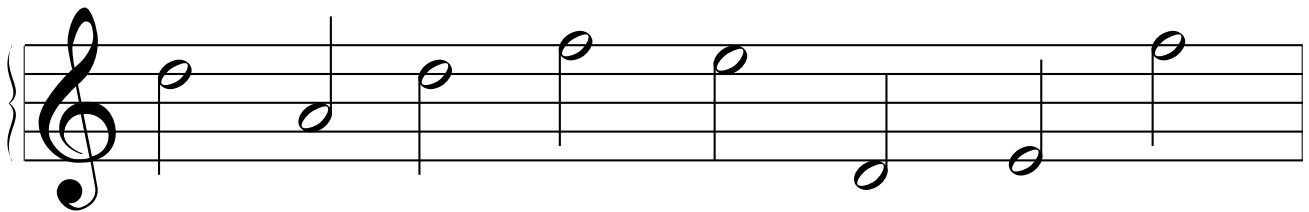
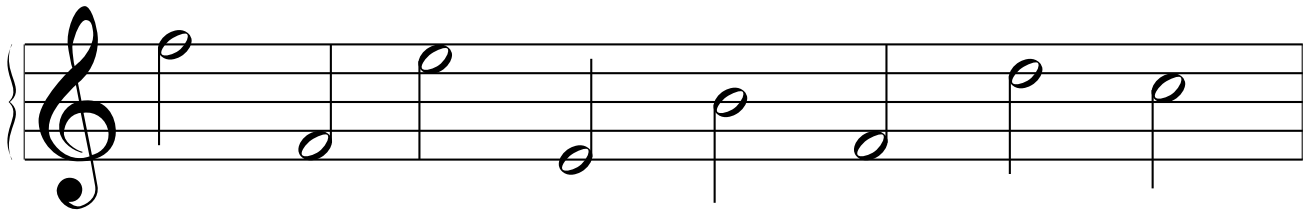
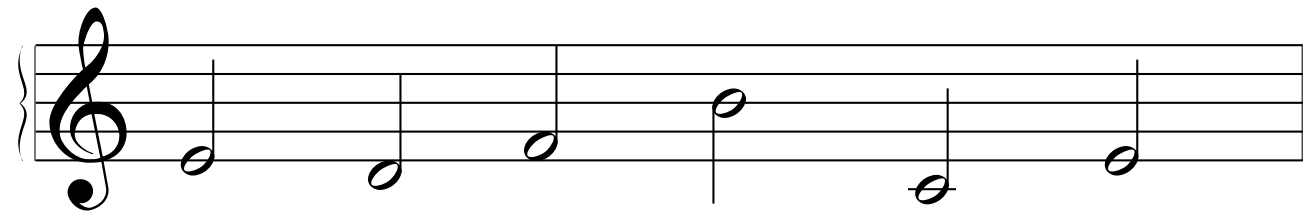
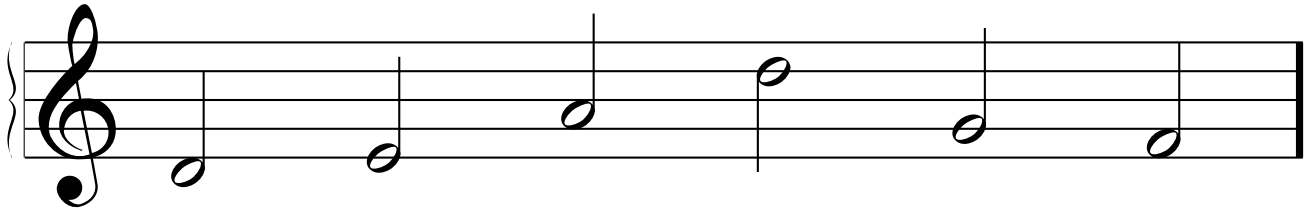


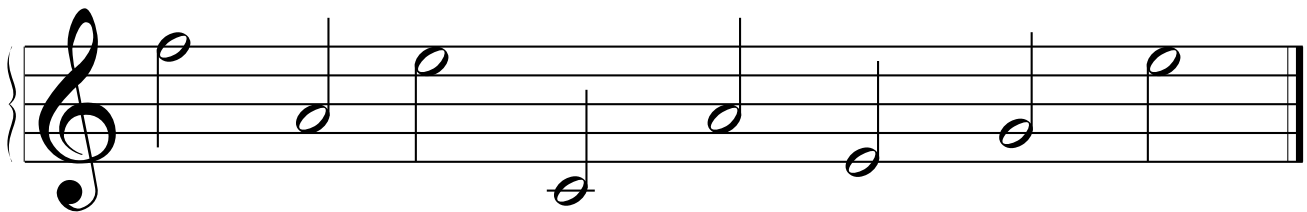
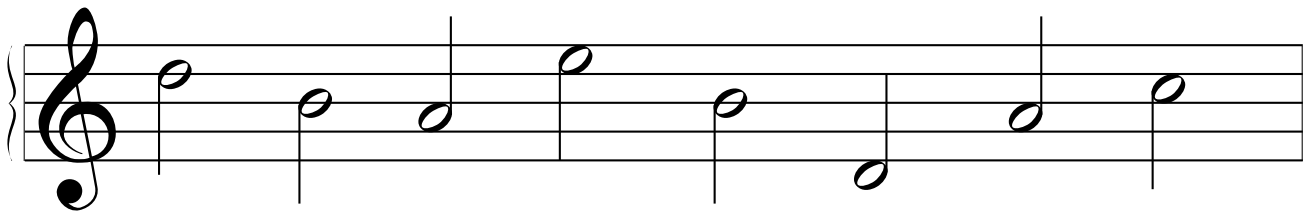
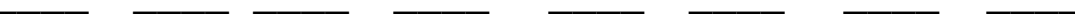
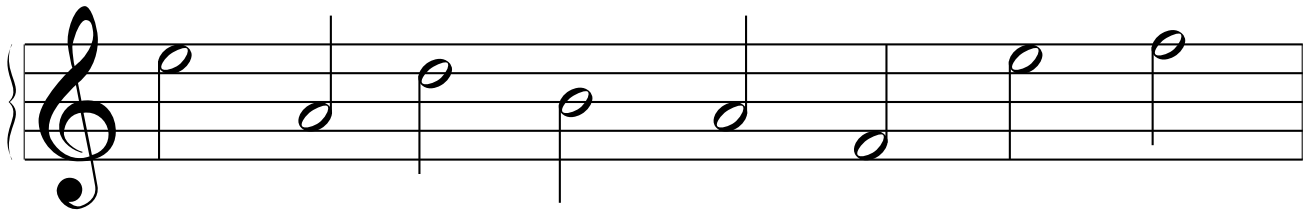
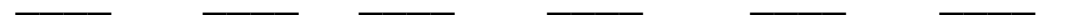
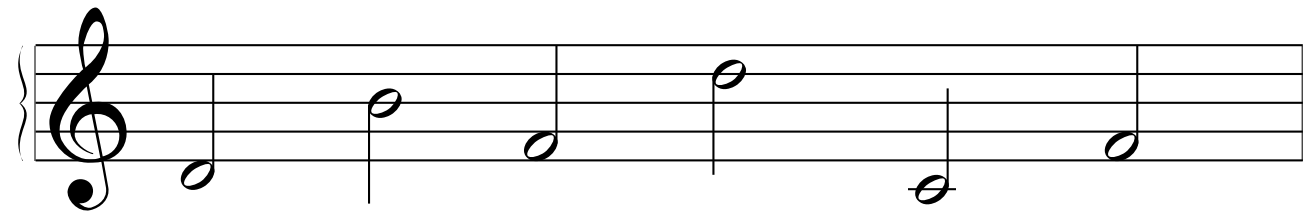
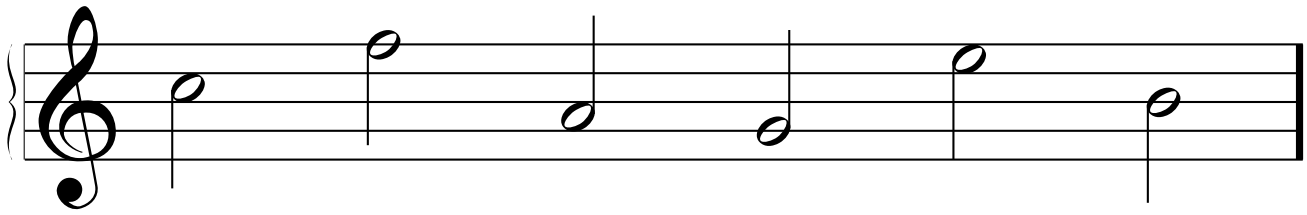
Treble Clef Lines and Spaces - 1

Name _____



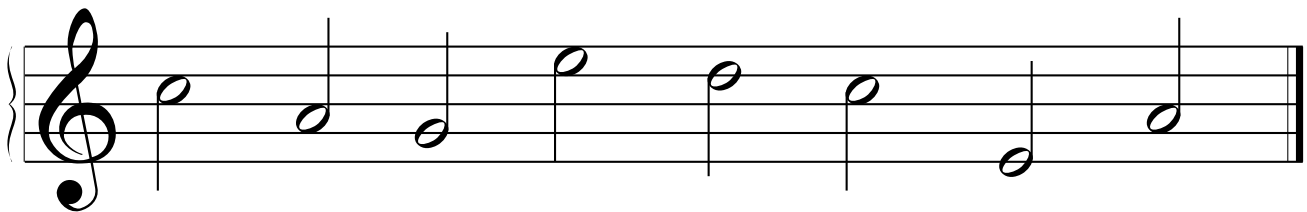
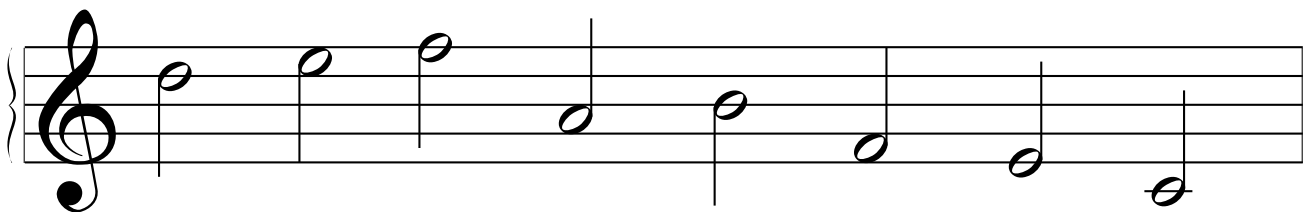
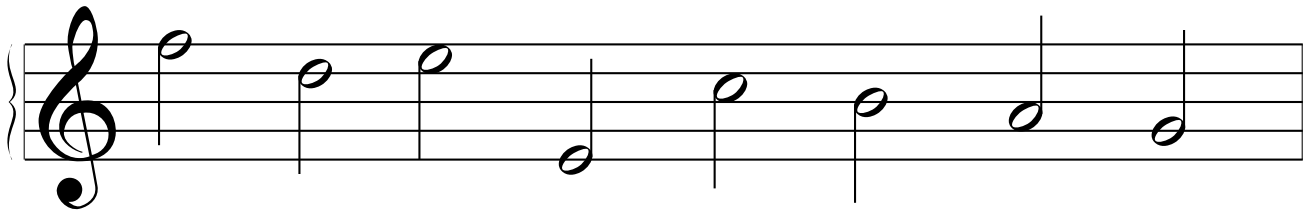
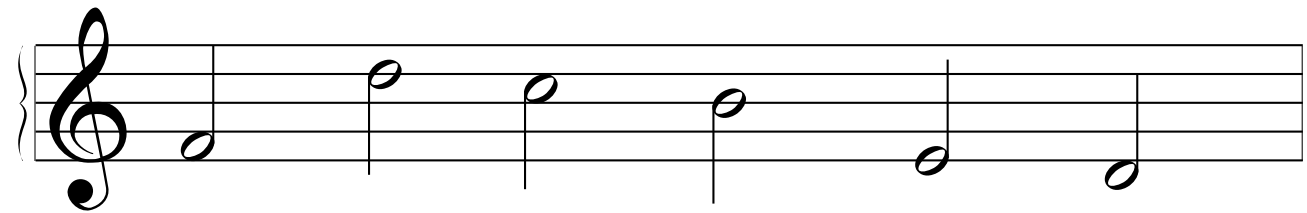
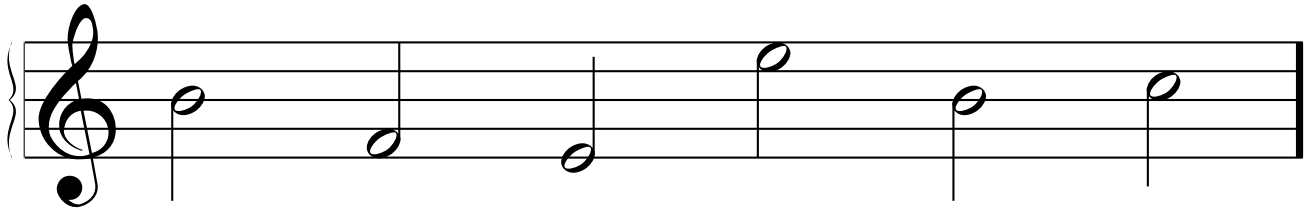
Treble Clef Lines and Spaces - 2

Name _____



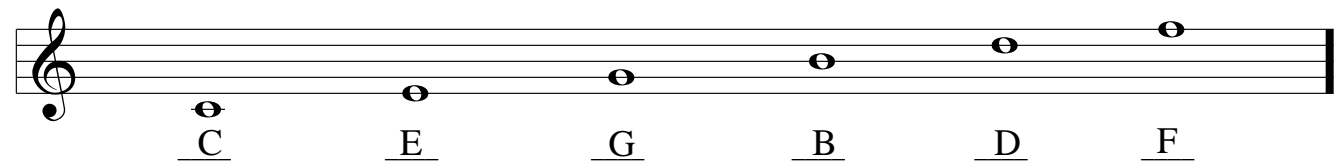
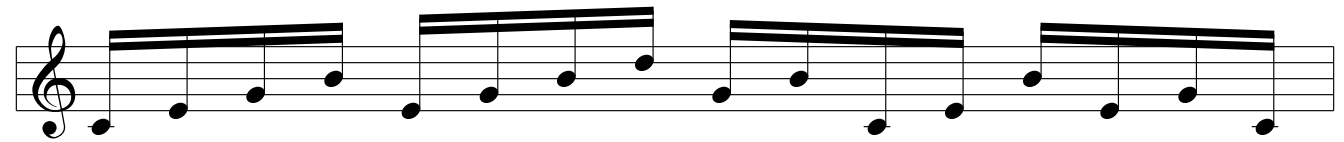
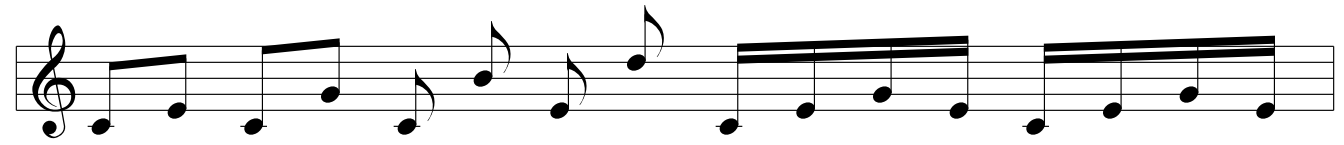
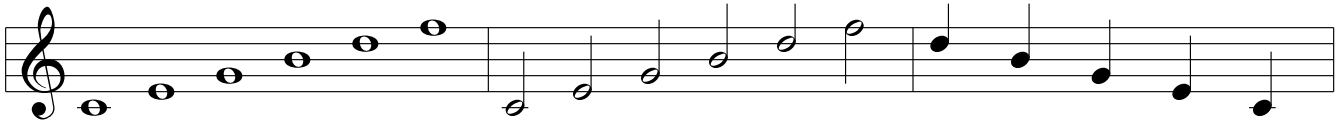
Treble Clef Lines and Spaces - 3

Name _____



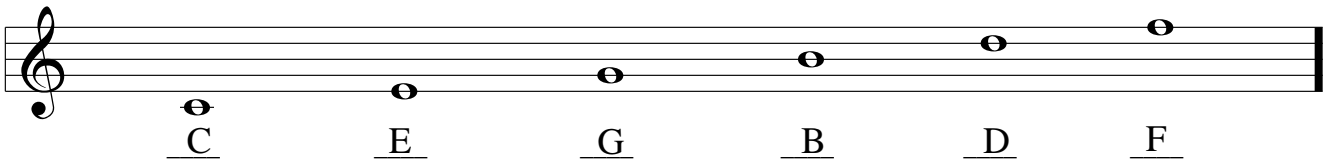
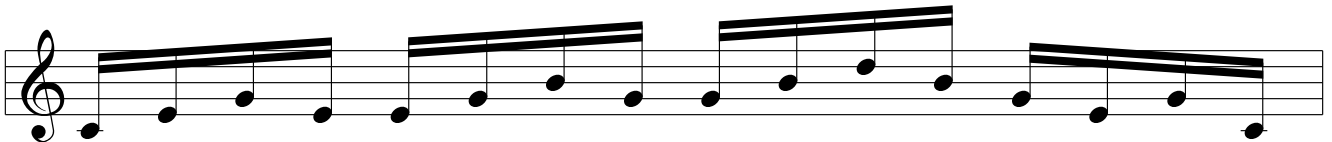
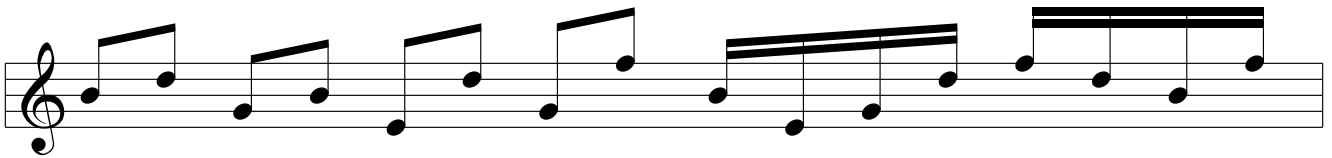
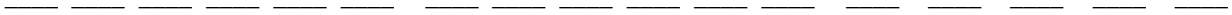
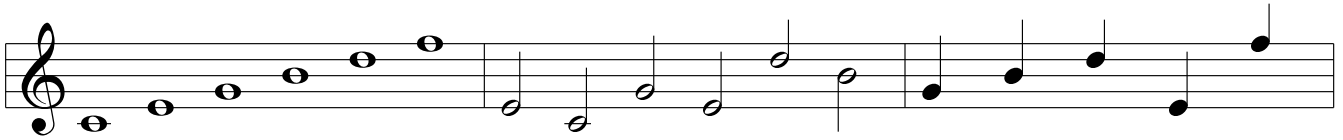
Treble Clef Lines-1

Name _____



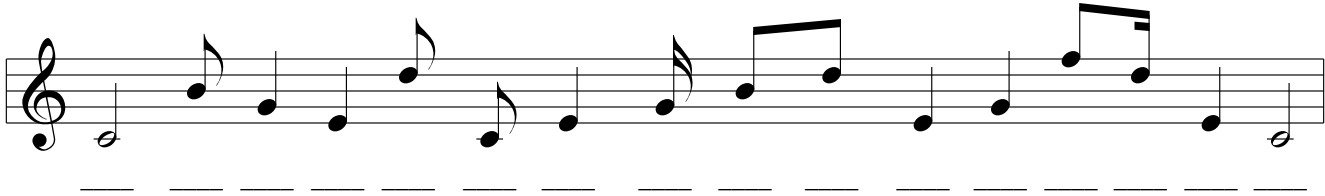
Treble Clef Lines-2

Name _____



Treble Clef Lines-3

Name _____



A musical staff in treble clef with a dashed line below it. The staff contains a sequence of notes: a quarter note on G4, an eighth note on A4, a quarter note on B4, a quarter note on C5, an eighth note on B4, a quarter note on A4, a quarter note on G4, an eighth note on F4, a quarter note on E4, a quarter note on D4, an eighth note on C4, a quarter note on B3, a quarter note on A3, and a quarter note on G3.



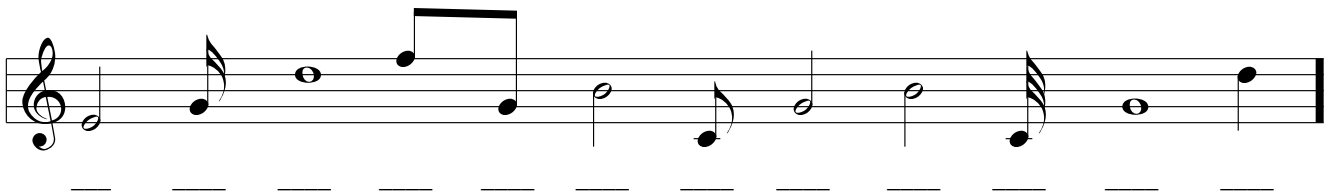
A musical staff in treble clef with a dashed line below it. The staff contains a sequence of notes: a quarter note on G4, a quarter note on A4, an eighth note on B4, a sixteenth note on C5, a quarter note on B4, an eighth note on A4, a quarter note on G4, and a quarter note on F4.



A musical staff in treble clef with a dashed line below it. The staff contains a sequence of notes: a quarter note on G4, an eighth note on A4, a quarter note on B4, an eighth note on C5, a quarter note on B4, an eighth note on A4, a quarter note on G4, a quarter note on F4, a quarter note on E4, a quarter note on D4, a quarter note on C4, a quarter note on B3, a quarter note on A3, and a quarter note on G3.



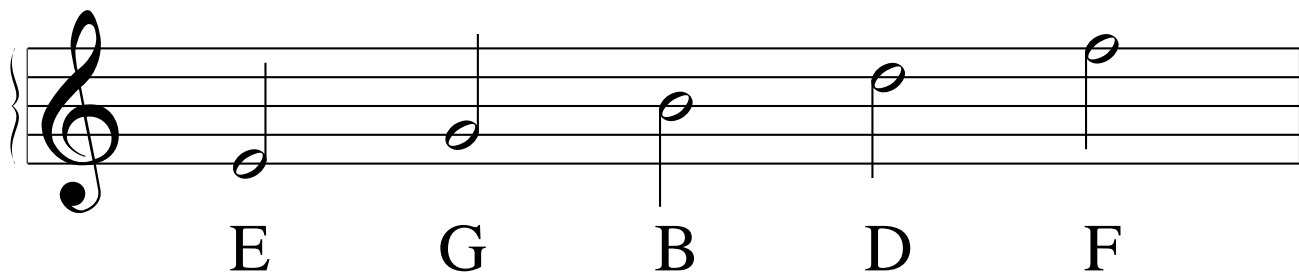
A musical staff in treble clef with a dashed line below it. The staff contains a sequence of notes: an eighth note on G4, a sixteenth note on A4, a quarter note on B4, a quarter note on C5, an eighth note on B4, a quarter note on A4, a quarter note on G4, an eighth note on F4, a quarter note on E4, a quarter note on D4, an eighth note on C4, a quarter note on B3, a quarter note on A3, a quarter note on G3, and a quarter note on F3.



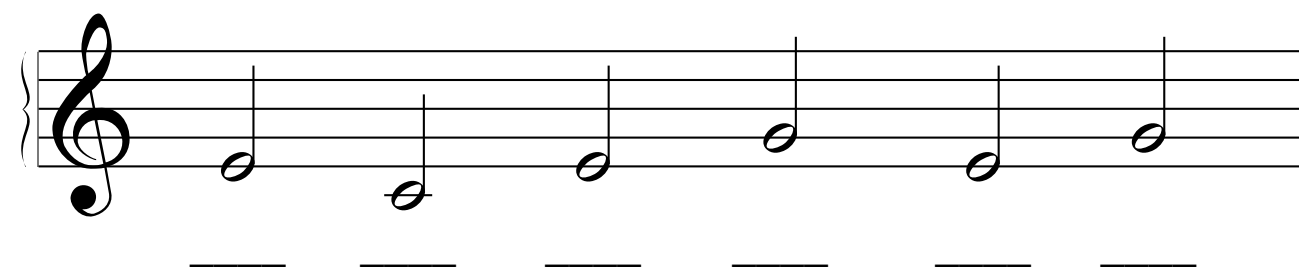
A musical staff in treble clef with a dashed line below it. The staff contains a sequence of notes: a quarter note on G4, an eighth note on A4, a quarter note on B4, a quarter note on C5, a quarter note on B4, a quarter note on A4, a quarter note on G4, a quarter note on F4, a quarter note on E4, a quarter note on D4, a quarter note on C4, a quarter note on B3, a quarter note on A3, and a quarter note on G3.

Treble Clef Lines - 1

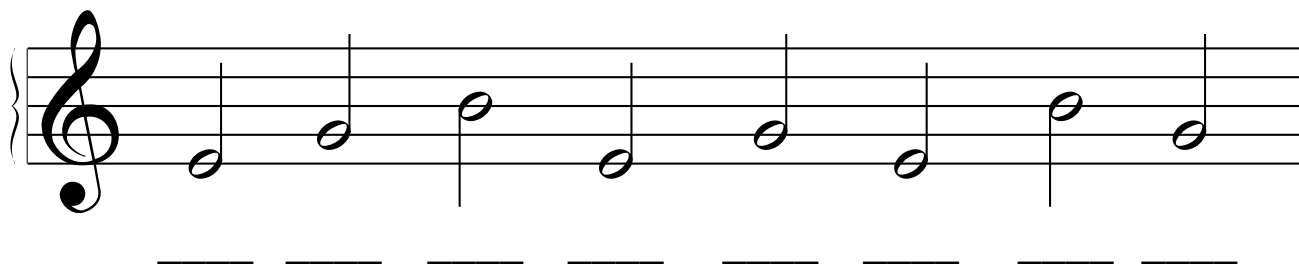
Name _____



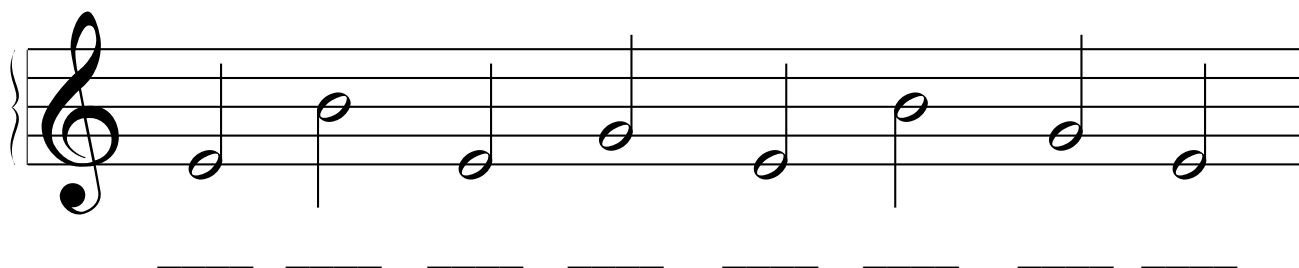
A musical staff with a treble clef. It contains five quarter notes: E (first line), G (second line), B (third line), D (fourth line), and F (first space). The notes are labeled with their respective letters below the staff.



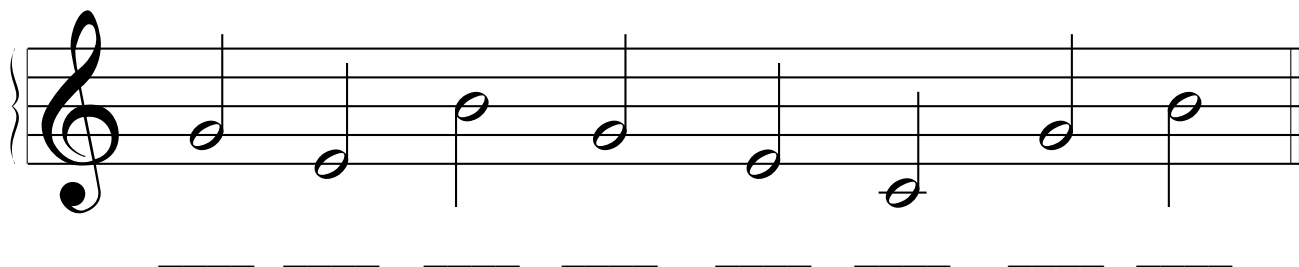
A musical staff with a treble clef. It contains six blank quarter notes on the lines and spaces, intended for student practice.



A musical staff with a treble clef. It contains seven blank quarter notes on the lines and spaces, intended for student practice.



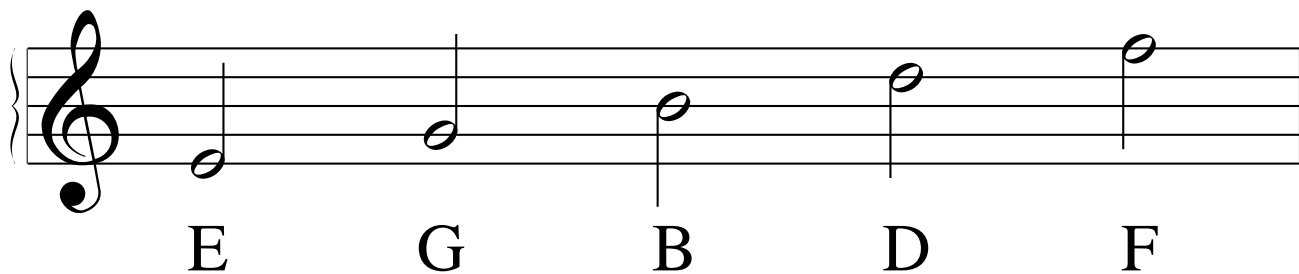
A musical staff with a treble clef. It contains eight blank quarter notes on the lines and spaces, intended for student practice.



A musical staff with a treble clef. It contains nine blank quarter notes on the lines and spaces, intended for student practice.

Treble Clef Lines - 2

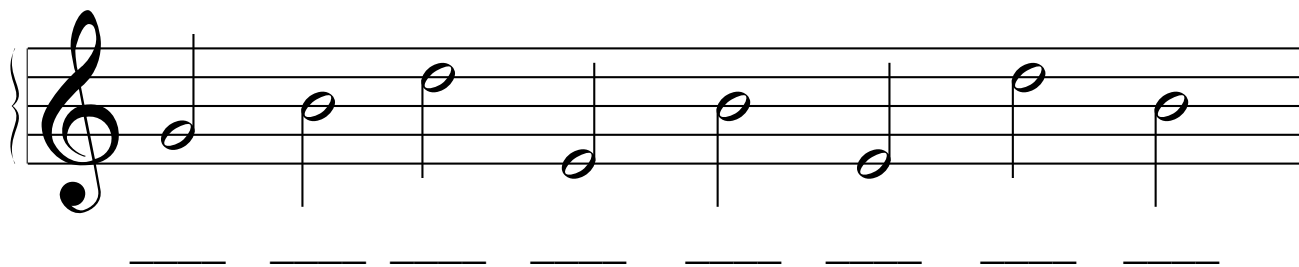
Name _____



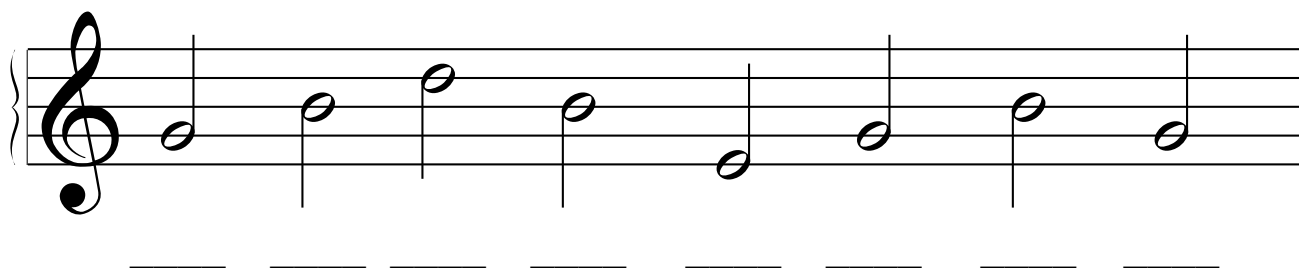
A musical staff in treble clef showing five notes: E (first line), G (second line), B (third line), D (fourth line), and F (first space). The notes are quarter notes.



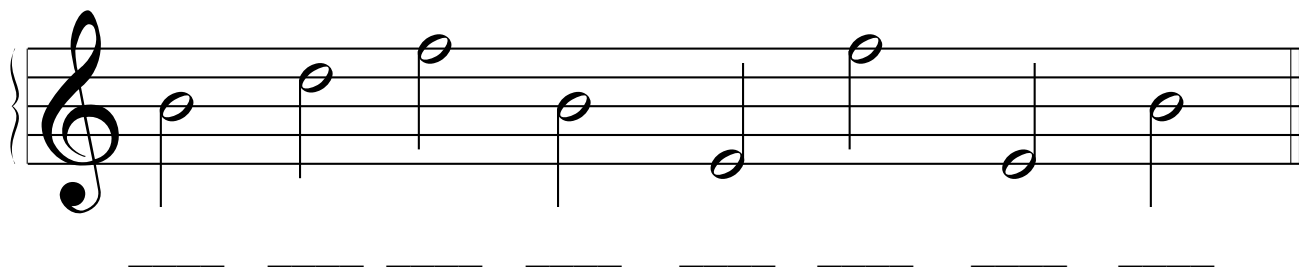
A musical staff in treble clef with six blank lines for writing notes. Below the staff are six short horizontal dashes.



A musical staff in treble clef with seven notes: E (first line), G (second line), B (third line), D (fourth line), F (first space), G (second line), and A (second space). The notes are quarter notes.



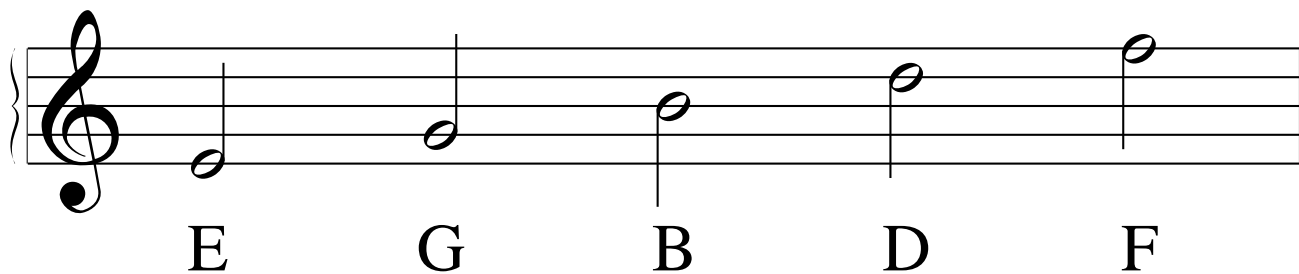
A musical staff in treble clef with seven notes: E (first line), G (second line), B (third line), D (fourth line), F (first space), G (second line), and A (second space). The notes are quarter notes.



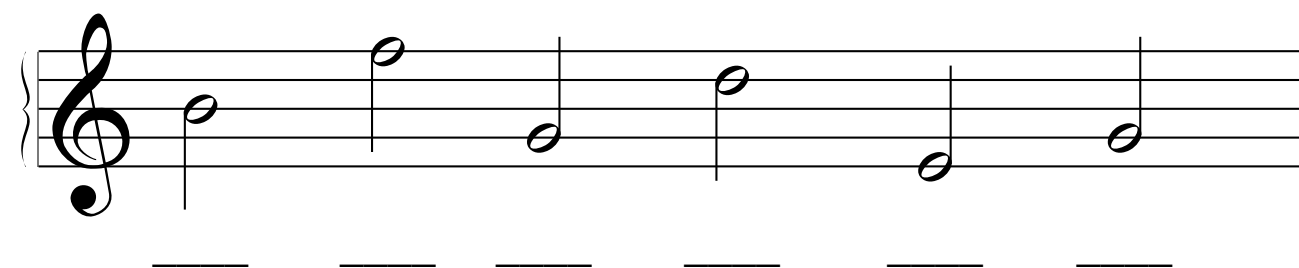
A musical staff in treble clef with seven notes: E (first line), G (second line), B (third line), D (fourth line), F (first space), G (second line), and A (second space). The notes are quarter notes.

Treble Clef Lines - 3

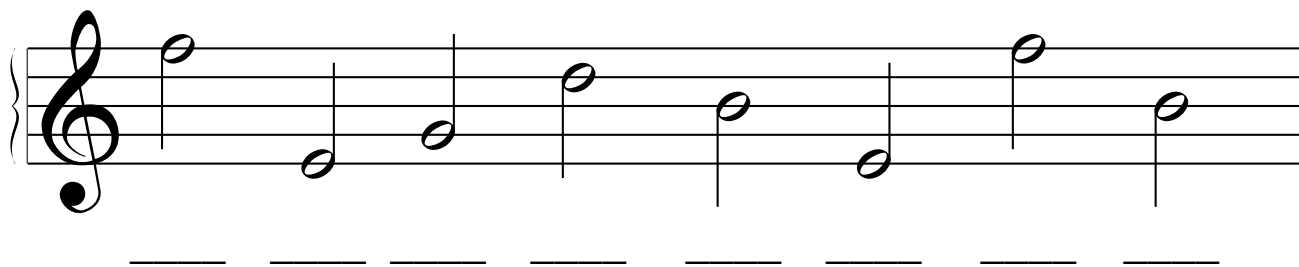
Name _____



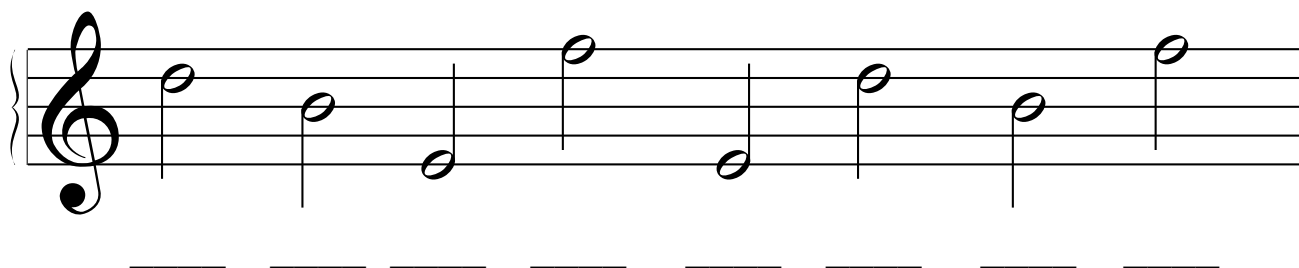
A musical staff with a treble clef. It contains five quarter notes: E (first line), G (second line), B (third line), D (fourth line), and F (fifth line). The notes are labeled with their respective letters below the staff.



A musical staff with a treble clef. It contains six quarter notes: G (second line), B (third line), D (fourth line), F (fifth line), A (first space), and G (second line). Below the staff are seven dashed lines for handwriting practice.



A musical staff with a treble clef. It contains seven quarter notes: B (third line), D (fourth line), F (fifth line), A (first space), C (second line), B (third line), and D (fourth line). Below the staff are seven dashed lines for handwriting practice.



A musical staff with a treble clef. It contains seven quarter notes: D (fourth line), F (fifth line), A (first space), C (second line), E (third line), D (fourth line), and F (fifth line). Below the staff are seven dashed lines for handwriting practice.



A musical staff with a treble clef. It contains seven quarter notes: F (fifth line), A (first space), C (second line), E (third line), G (second line), F (fifth line), and A (first space). Below the staff are seven dashed lines for handwriting practice.

Treble Clef Spaces-1

Name _____

A musical staff with a treble clef. The notes are placed in the spaces of the staff: C (first space), D (second space), E (third space), F (fourth space), G (fifth space), A (first space above the staff), B (second space above the staff), and C (third space above the staff). Below the staff is a dashed line for writing.

A musical staff with a treble clef. The notes are placed in the spaces of the staff: C, D, E, F, G, A, B, C, D, E, F, G, A, B, C. Below the staff is a dashed line for writing.

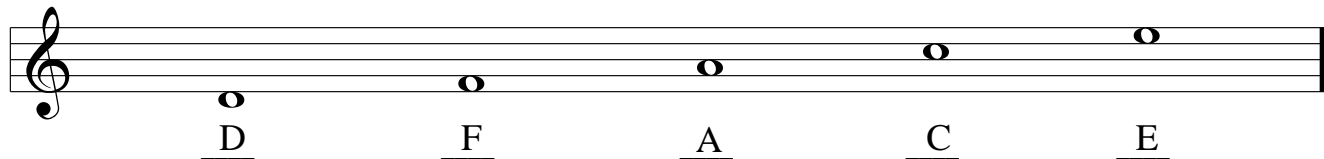
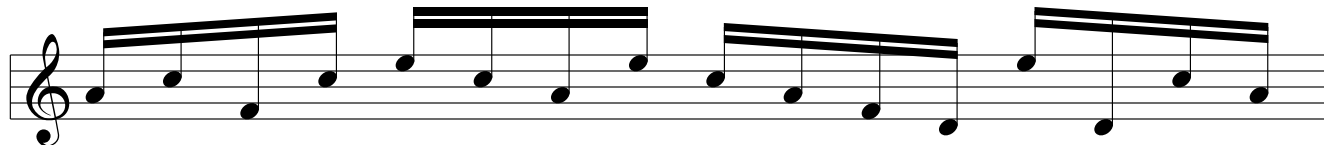
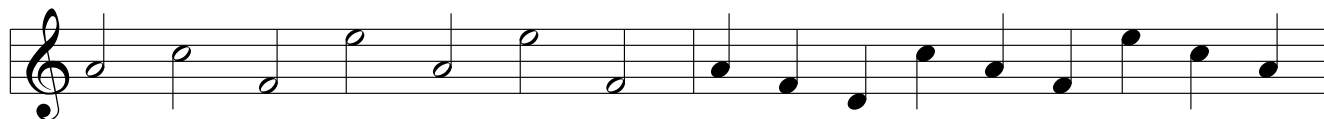
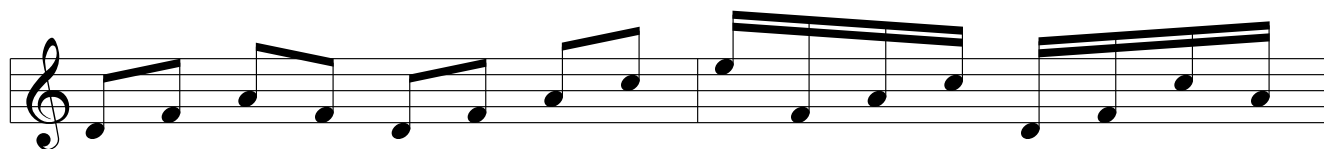
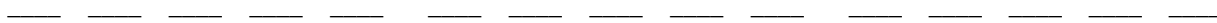
A musical staff with a treble clef. The notes are placed in the spaces of the staff: C, D, E, F, G, A, B, C, D, E, F, G, A, B, C. Below the staff is a dashed line for writing.

A musical staff with a treble clef. The notes are placed in the spaces of the staff: C, D, E, F, G, A, B, C, D, E, F, G, A, B, C. Below the staff is a dashed line for writing.

A musical staff with a treble clef. The notes are placed in the spaces of the staff: D, F, A, C, E. Below each note is its letter name: D, F, A, C, E.

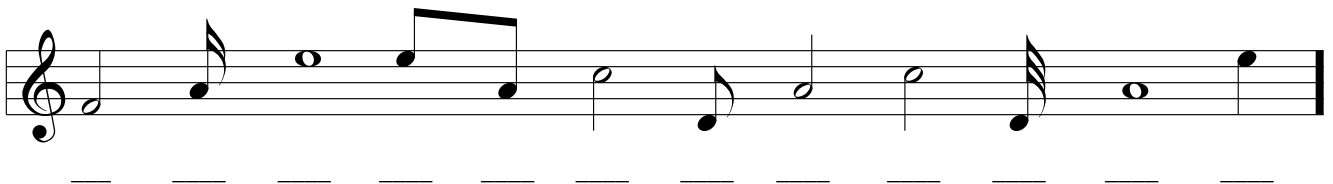
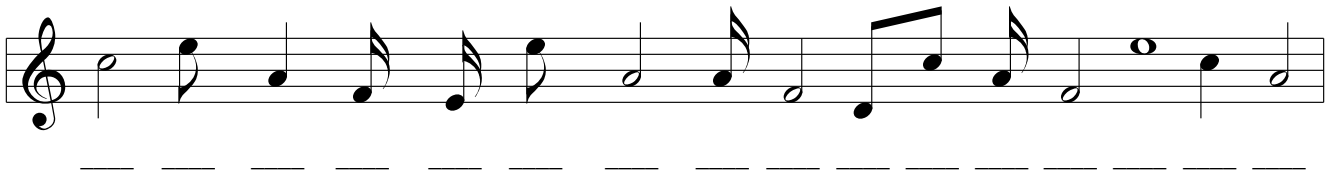
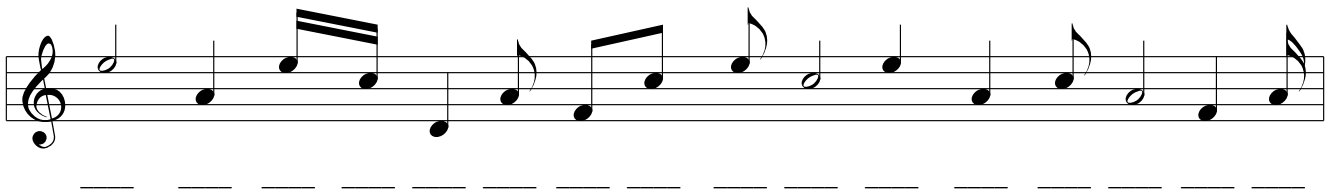
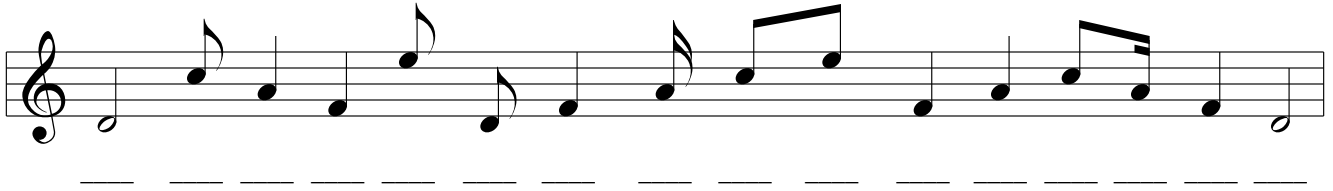
Treble Clef Spaces-2

Name _____



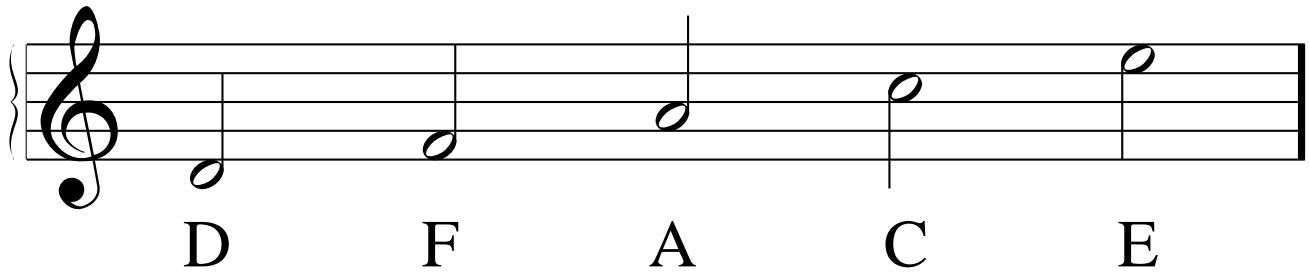
Treble Clef Spaces-3

Name _____

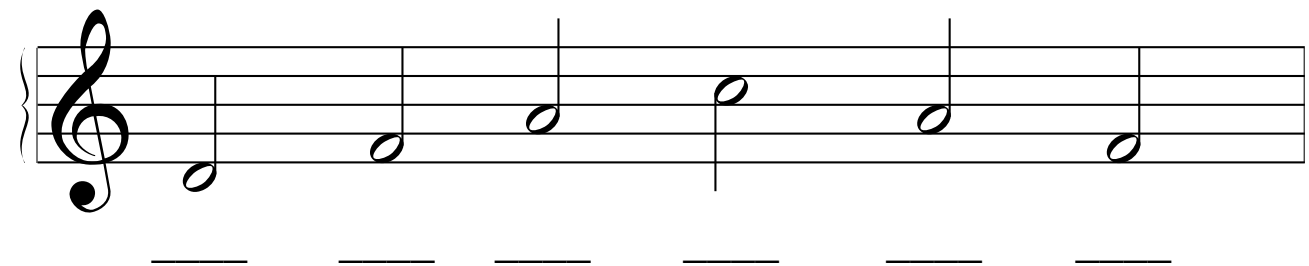


Treble Clef Spaces - 1

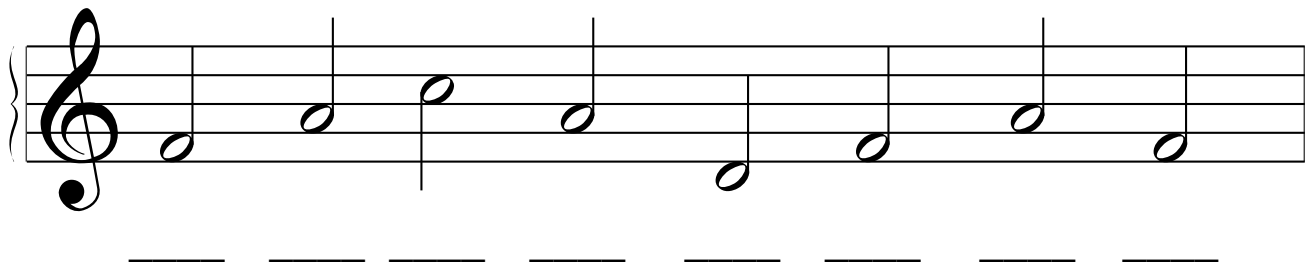
Name _____



A musical staff with a treble clef. Five quarter notes are placed in the spaces of the staff, corresponding to the letters D, F, A, C, and E. The notes are: D (first space), F (second space), A (third space), C (fourth space), and E (fifth space).



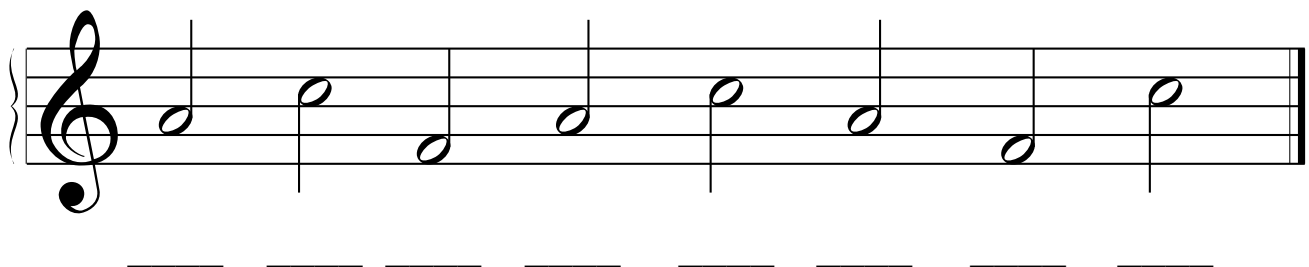
A musical staff with a treble clef. Below the staff are six horizontal dashed lines, one for each space, intended for writing notes.



A musical staff with a treble clef. Seven quarter notes are placed in the spaces of the staff. Below the staff are seven horizontal dashed lines, one for each space, intended for writing notes.



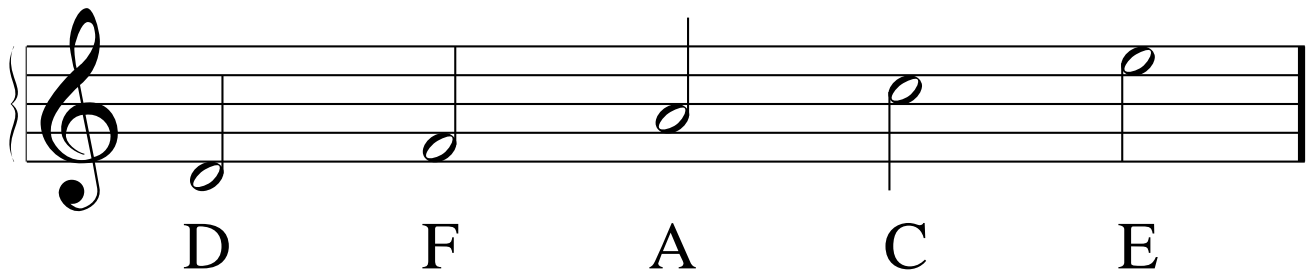
A musical staff with a treble clef. Eight quarter notes are placed in the spaces of the staff. Below the staff are eight horizontal dashed lines, one for each space, intended for writing notes.



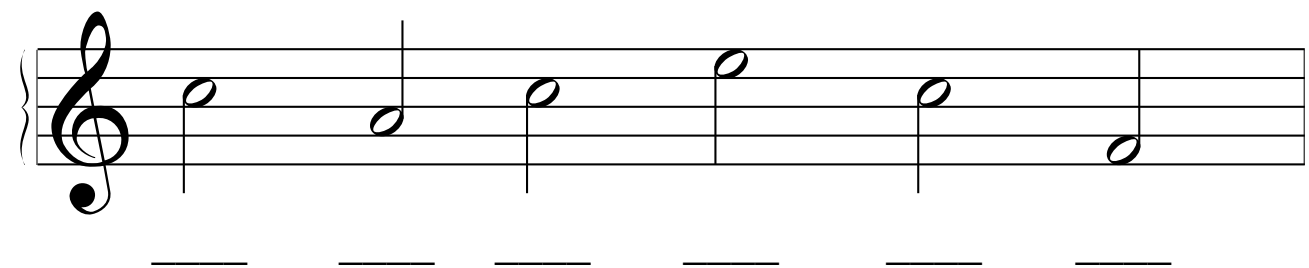
A musical staff with a treble clef. Nine quarter notes are placed in the spaces of the staff. Below the staff are nine horizontal dashed lines, one for each space, intended for writing notes.

Treble Clef Spaces - 2

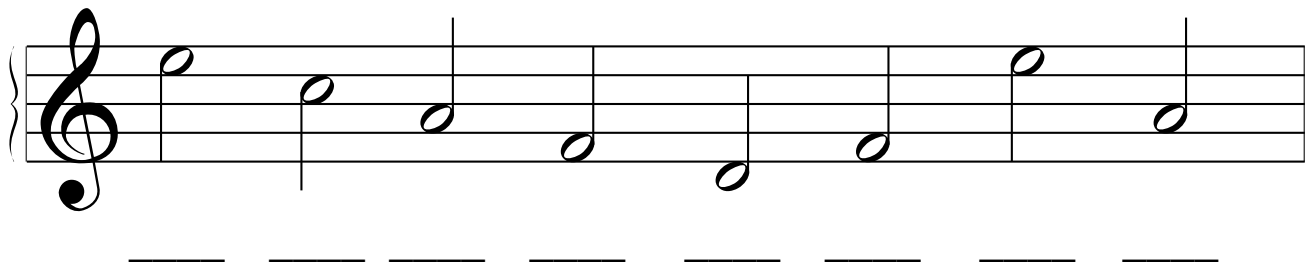
Name _____



A musical staff with a treble clef. Five quarter notes are placed in the spaces of the staff, corresponding to the letters D, F, A, C, and E. The notes are: D (first space), F (second space), A (third space), C (fourth space), and E (fifth space).



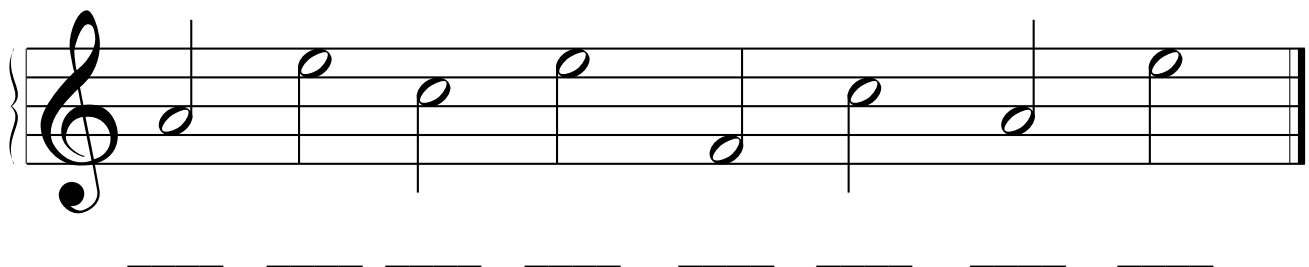
A musical staff with a treble clef. The staff is empty, with a dashed line below it for writing.



A musical staff with a treble clef. The notes are: E (fifth space), D (fourth space), C (fourth line), B (third space), A (third line), G (second space), F (second line), and E (first space). A dashed line is below the staff.



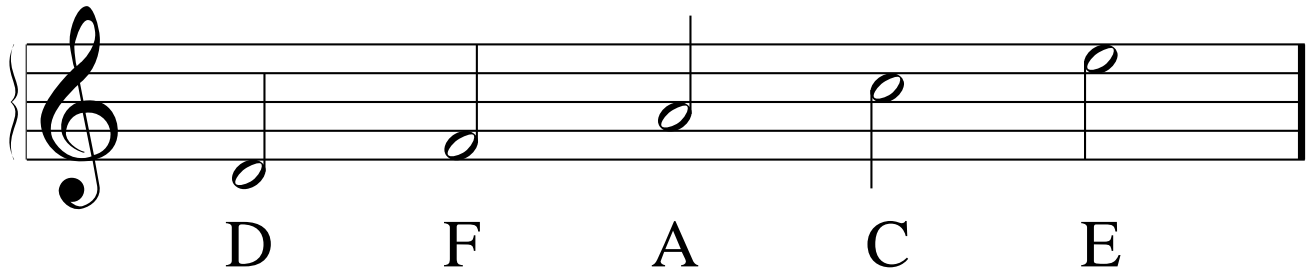
A musical staff with a treble clef. The notes are: E (fifth space), D (fourth space), C (fourth line), B (third space), A (third line), G (second space), F (second line), and E (first space). A dashed line is below the staff.



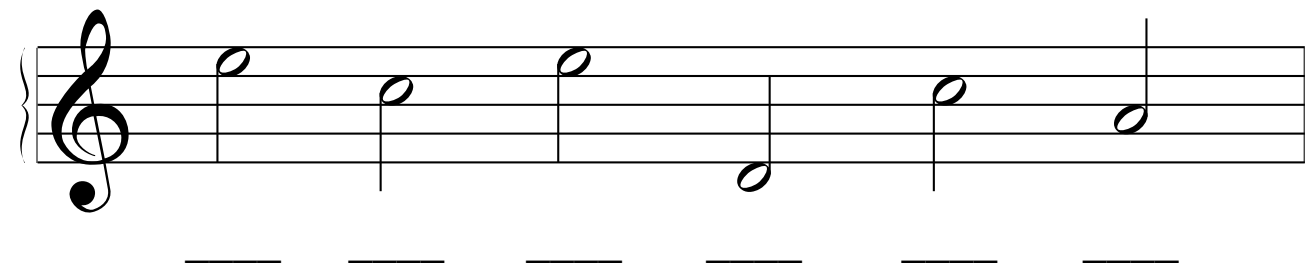
A musical staff with a treble clef. The notes are: E (fifth space), D (fourth space), C (fourth line), B (third space), A (third line), G (second space), F (second line), and E (first space). A dashed line is below the staff.

Treble Clef Spaces - 3

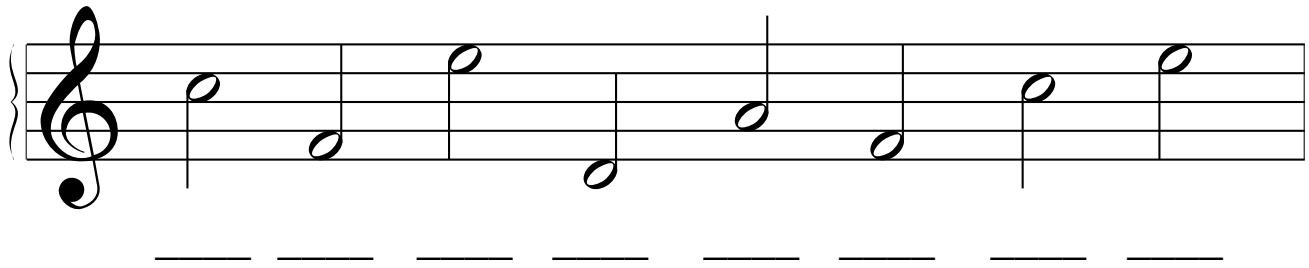
Name _____



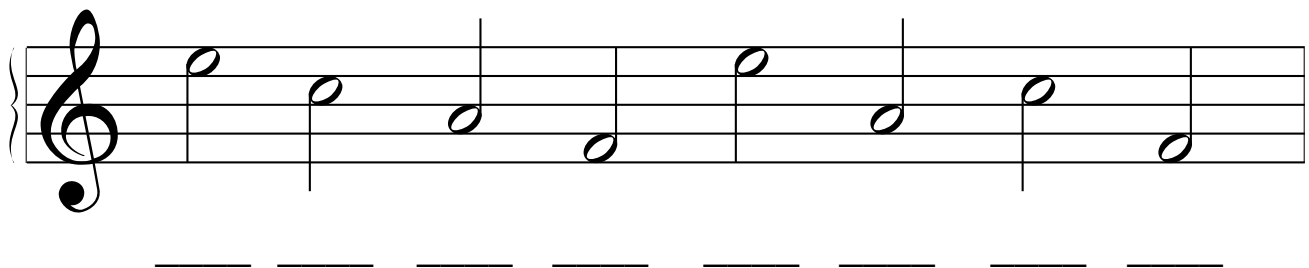
A musical staff with a treble clef. Five quarter notes are placed in the spaces of the staff, corresponding to the letters D, F, A, C, and E. The notes are: D (first space), F (second space), A (third space), C (fourth space), and E (fifth space).



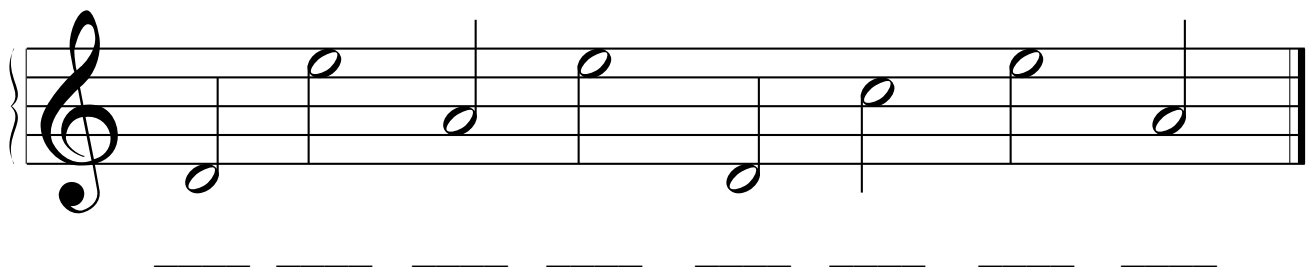
A musical staff with a treble clef. Below the staff are six horizontal dashed lines for writing notes.



A musical staff with a treble clef. Notes are placed in the spaces and lines of the staff. The notes are: F (second space), A (third space), C (fourth space), D (first line), F (second space), A (third space), and C (fourth space). Below the staff are six horizontal dashed lines for writing notes.



A musical staff with a treble clef. Notes are placed in the spaces and lines of the staff. The notes are: A (third space), C (fourth space), D (first line), F (second space), A (third space), and C (fourth space). Below the staff are six horizontal dashed lines for writing notes.



A musical staff with a treble clef. Notes are placed in the spaces and lines of the staff. The notes are: D (first space), F (second space), A (third space), C (fourth space), D (first line), F (second space), A (third space), and C (fourth space). Below the staff are six horizontal dashed lines for writing notes.