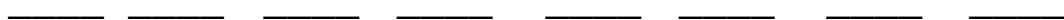
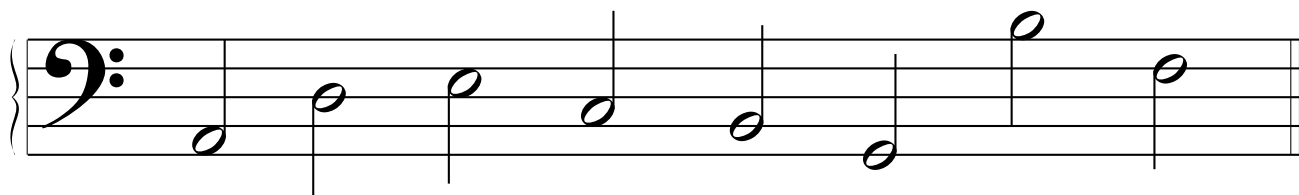
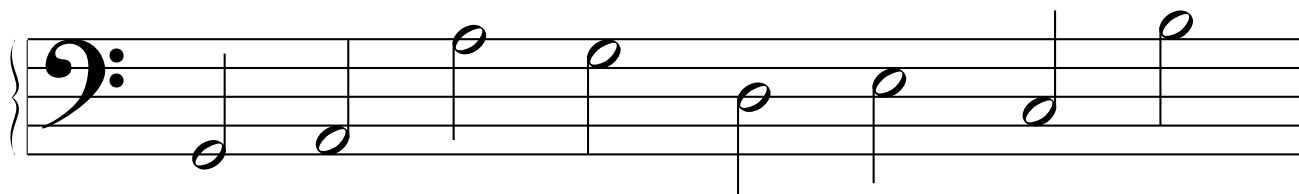
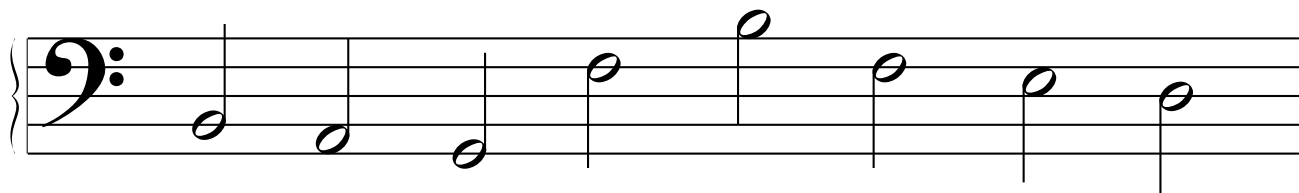
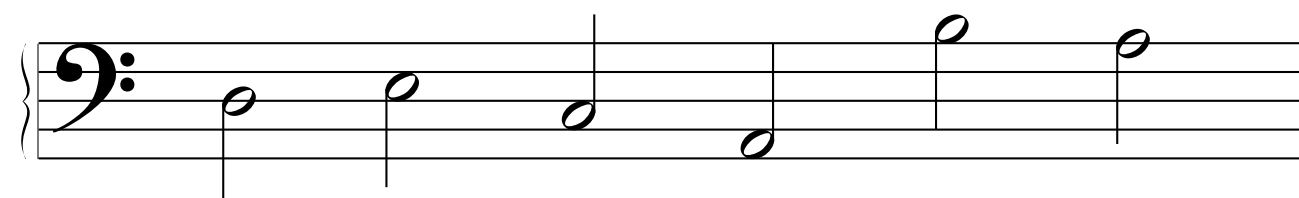
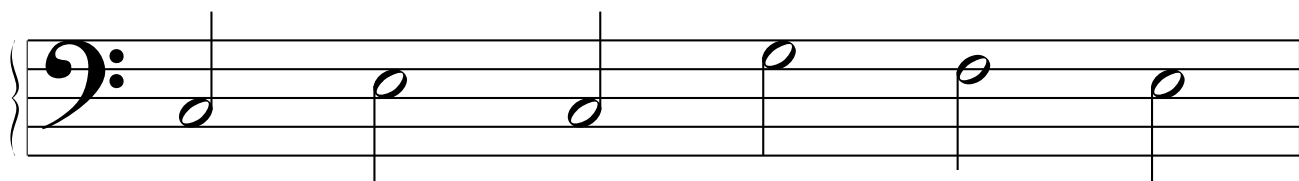


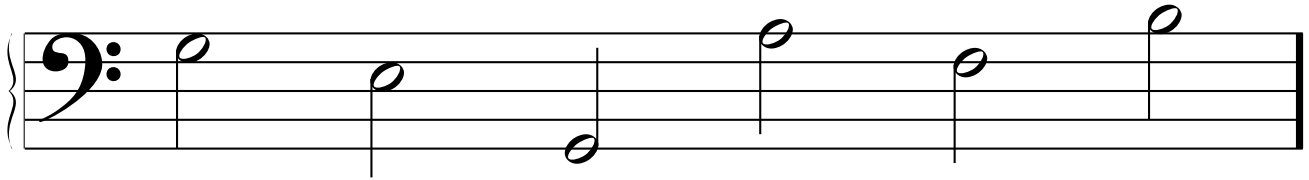
# Bass Clef Lines and Spaces - 1

Name \_\_\_\_\_

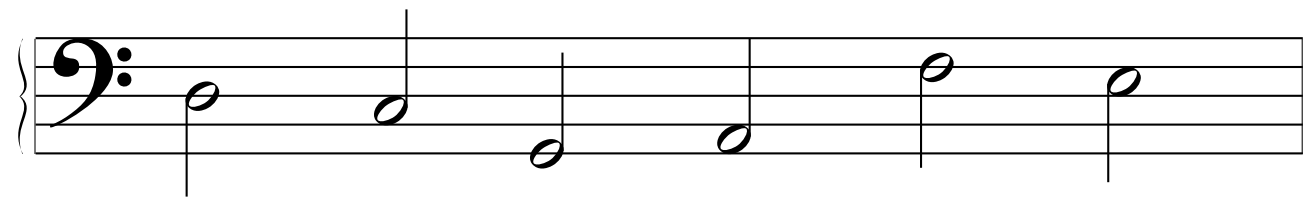


# Bass Clef Lines and Spaces - 2

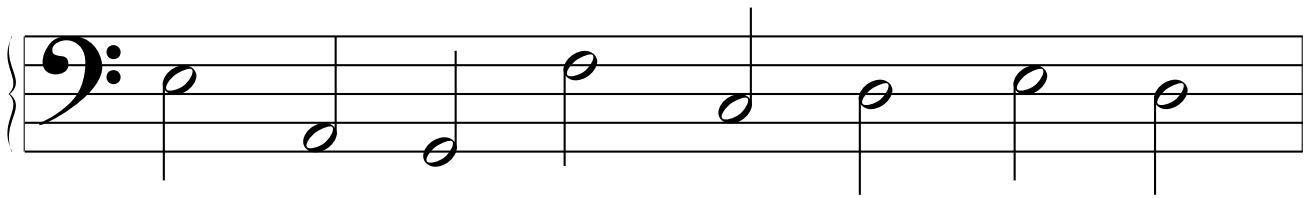
Name \_\_\_\_\_



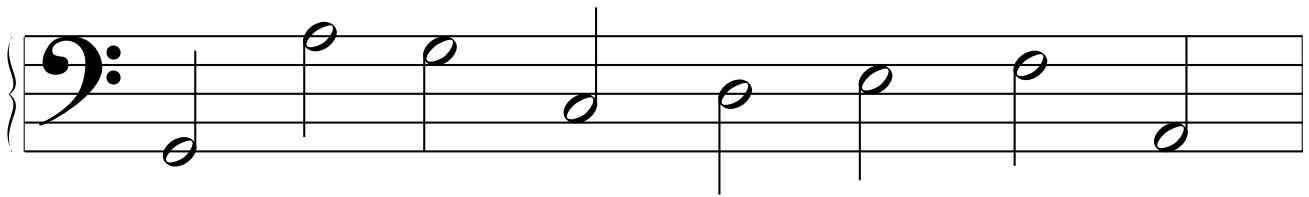
\_\_\_\_\_



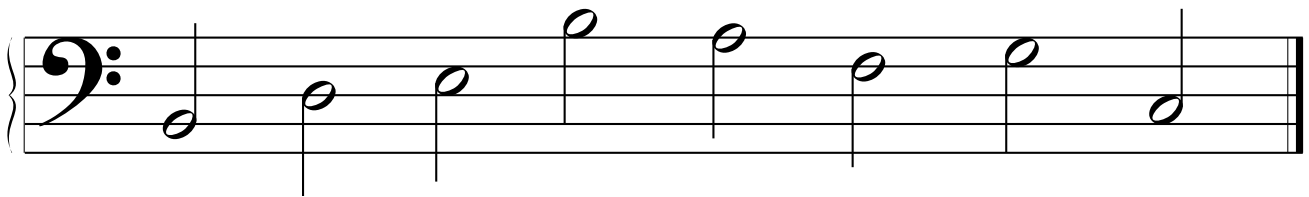
\_\_\_\_\_



\_\_\_\_\_



\_\_\_\_\_



\_\_\_\_\_

# Bass Clef Lines and Spaces - 3

Name \_\_\_\_\_

A bass clef staff with a brace on the left. It contains six quarter notes: G2 (line 1), F2 (space 1), E2 (line 2), D2 (space 2), C2 (line 3), and B1 (space 3). The notes are arranged in an ascending sequence from left to right.

\_\_\_\_\_

A bass clef staff with a brace on the left. It contains six quarter notes: B1 (space 3), C2 (line 3), D2 (space 2), E2 (line 2), F2 (space 1), and G2 (line 1). The notes are arranged in a descending sequence from left to right.

\_\_\_\_\_

A bass clef staff with a brace on the left. It contains eight quarter notes: G2 (line 1), A2 (space 1), B2 (line 2), C3 (space 2), D3 (line 3), E3 (space 3), F3 (line 4), and G3 (space 4). The notes are arranged in an ascending sequence from left to right.

\_\_\_\_\_

A bass clef staff with a brace on the left. It contains eight quarter notes: G3 (space 4), F3 (line 4), E3 (space 3), D3 (line 3), C3 (space 2), B2 (line 2), A2 (space 1), and G2 (line 1). The notes are arranged in a descending sequence from left to right.

\_\_\_\_\_

A bass clef staff with a brace on the left. It contains eight quarter notes: G2 (line 1), A2 (space 1), B2 (line 2), C3 (space 2), D3 (line 3), E3 (space 3), F3 (line 4), and G3 (space 4). The notes are arranged in an ascending sequence from left to right.

\_\_\_\_\_

# Bass Clef Lines-1

Name \_\_\_\_\_



-----

-----

-----

-----

G      B      D      F      A      C

# Bass Clef Lines-2

Name \_\_\_\_\_



-----

-----

-----

-----

G                      B                      D                      F                      A                      C

# Bass Clef Lines-3

Name \_\_\_\_\_



\_\_\_\_\_

\_\_\_\_\_


\_\_\_\_\_

\_\_\_\_\_

\_\_\_\_\_


# Bass Clef Lines - 1

Name \_\_\_\_\_



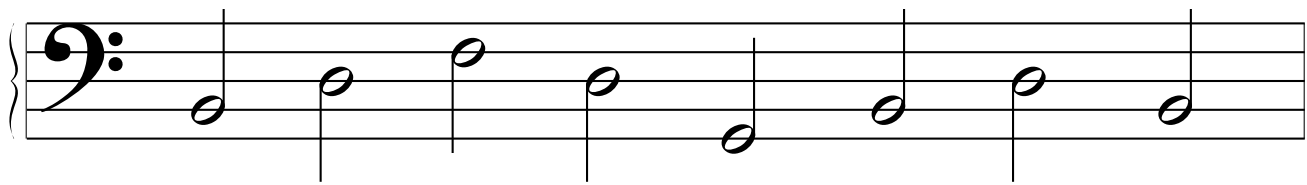
A bass clef staff with five notes: G (second space), B (third line), D (third space), F (fourth line), and A (fourth space). The notes are quarter notes.

G B D F A



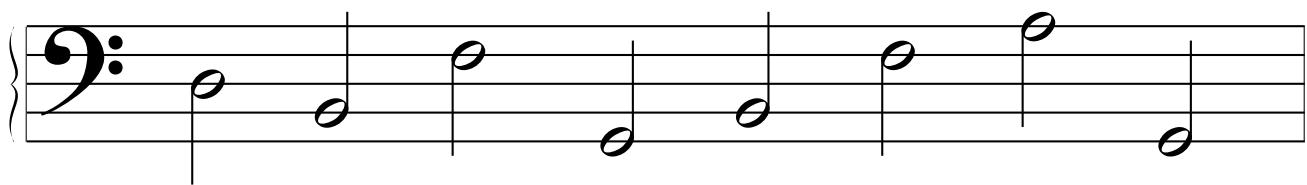
A bass clef staff with five notes: G (second space), B (third line), D (third space), F (fourth line), and A (fourth space). The notes are quarter notes.

\_\_\_\_\_




A bass clef staff with seven notes: G (second space), B (third line), D (third space), F (fourth line), G (second space), B (third line), and A (fourth space). The notes are quarter notes.

\_\_\_\_\_



A bass clef staff with seven notes: G (second space), B (third line), D (third space), F (fourth line), G (second space), B (third line), and A (fourth space). The notes are quarter notes.

\_\_\_\_\_




A bass clef staff with seven notes: G (second space), B (third line), D (third space), F (fourth line), G (second space), B (third line), and A (fourth space). The notes are quarter notes.

\_\_\_\_\_

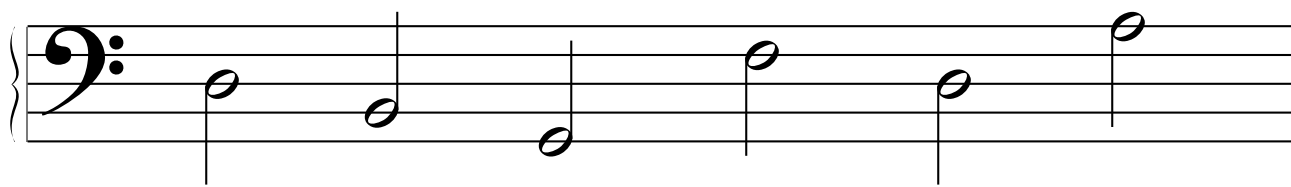
# Bass Clef Lines - 2

Name \_\_\_\_\_



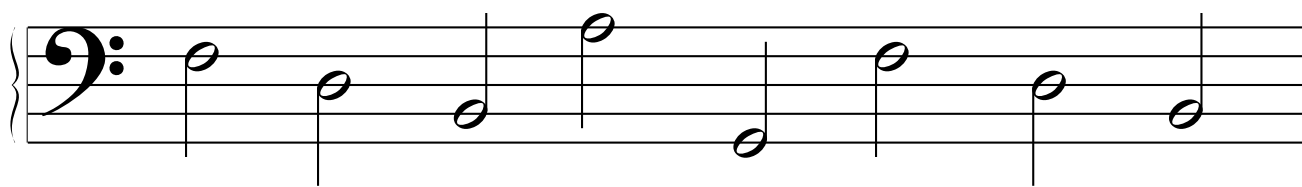
A bass clef staff with five notes: G (second space), B (third line), D (third space), F (second line), and A (first space). The notes are quarter notes.

G B D F A



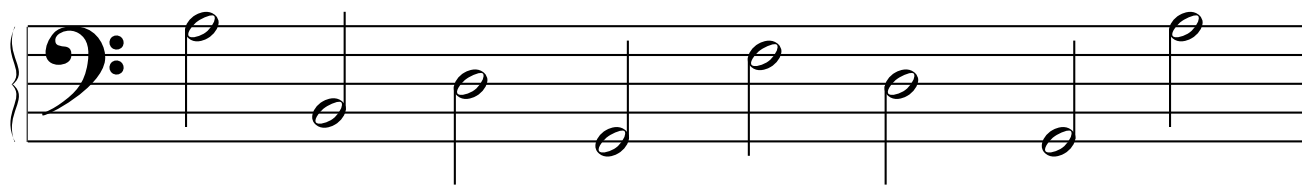
A bass clef staff with six blank notes for practice. Below the staff are six dashed lines for labeling.

\_\_\_\_\_



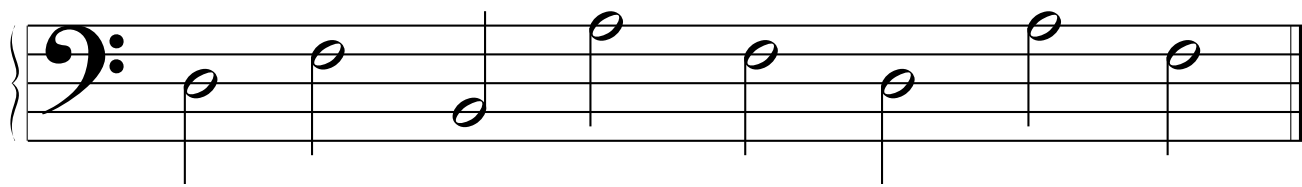
A bass clef staff with seven notes: G (second space), B (third line), D (third space), F (second line), G (second space), B (third line), and A (first space). The notes are quarter notes.

\_\_\_\_\_



A bass clef staff with seven notes: G (second space), B (third line), D (third space), F (second line), G (second space), B (third line), and A (first space). The notes are quarter notes.

\_\_\_\_\_




A bass clef staff with seven notes: G (second space), B (third line), D (third space), F (second line), G (second space), B (third line), and A (first space). The notes are quarter notes.

\_\_\_\_\_



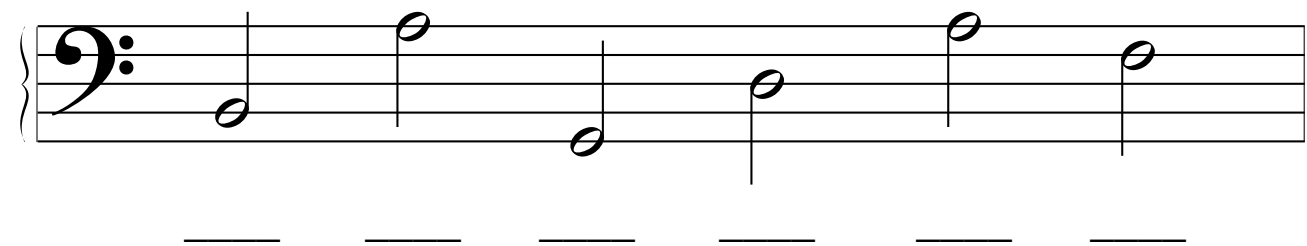
# Bass Clef Lines - 3

Name \_\_\_\_\_

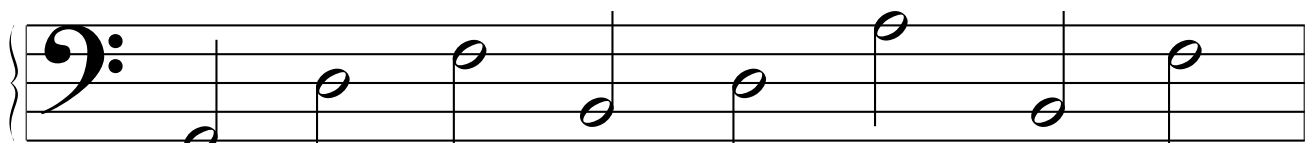


A bass clef staff with five notes: G (second line), B (third space), D (fourth space), F (first space), and A (second space). The notes are quarter notes.

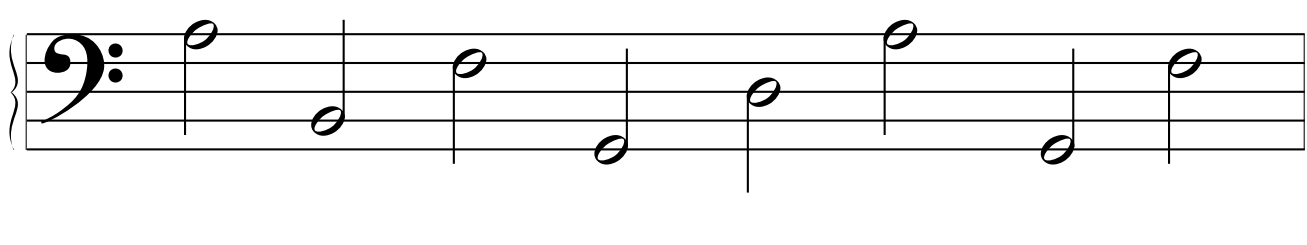
G B D F A




A bass clef staff with five blank lines for practice, corresponding to the notes G, B, D, F, and A from the previous staff.



A bass clef staff with five notes: G (second line), B (third space), D (fourth space), F (first space), and A (second space). The notes are quarter notes.



A bass clef staff with five blank lines for practice, corresponding to the notes G, B, D, F, and A from the previous staff.



A bass clef staff with five notes: G (second line), B (third space), D (fourth space), F (first space), and A (second space). The notes are quarter notes.



A bass clef staff with five blank lines for practice, corresponding to the notes G, B, D, F, and A from the previous staff.

# Bass Clef Spaces-1

Name \_\_\_\_\_



-----

-----

-----

-----

A

C

E

G

B

# Bass Clef Spaces-2

Name \_\_\_\_\_

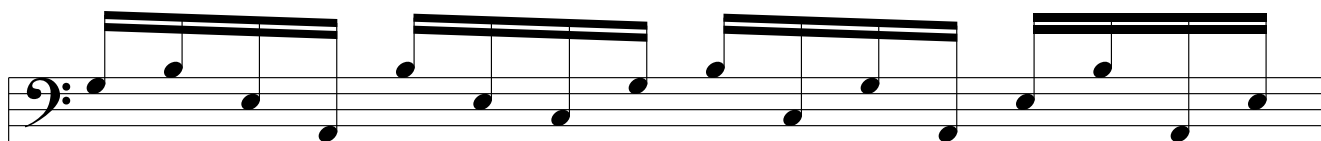
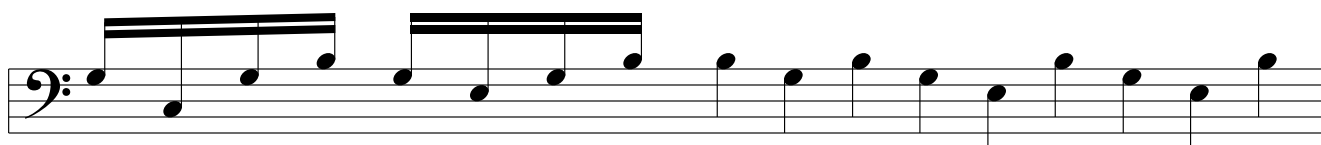
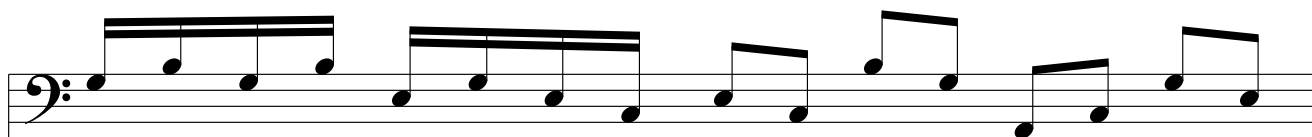


4/4



# Bass Clef Spaces-3

Name \_\_\_\_\_



# Bass Clef Spaces - 1

Name \_\_\_\_\_



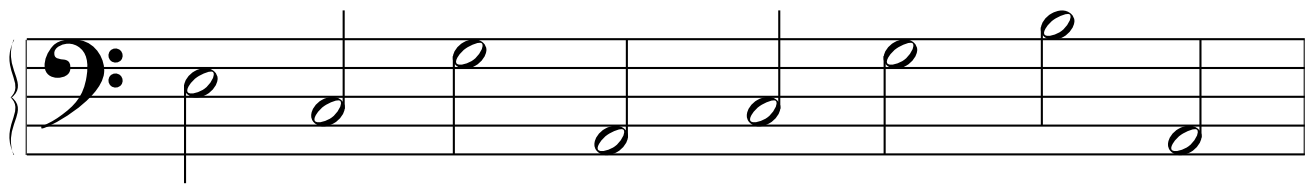
A C E G B



\_\_\_\_\_



\_\_\_\_\_



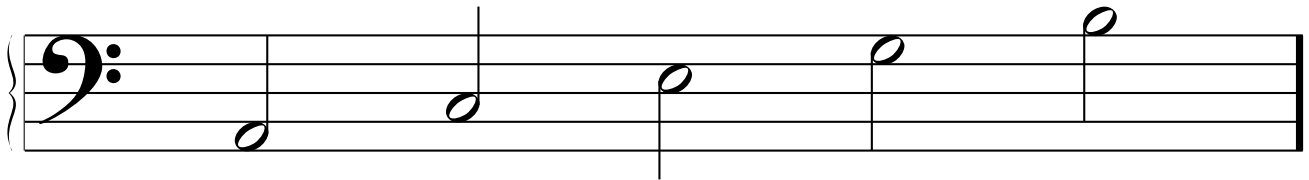
\_\_\_\_\_



\_\_\_\_\_

# Bass Clef Spaces - 2

Name \_\_\_\_\_



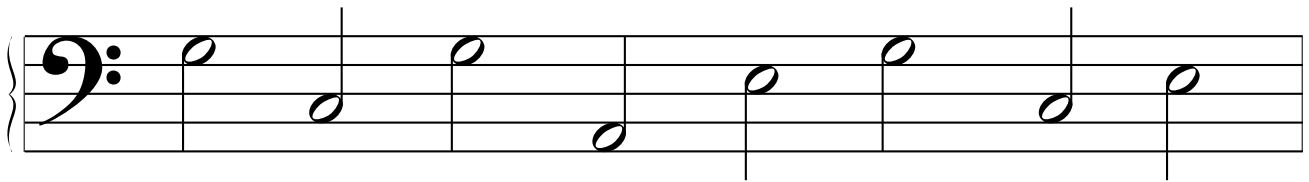
A C E G B



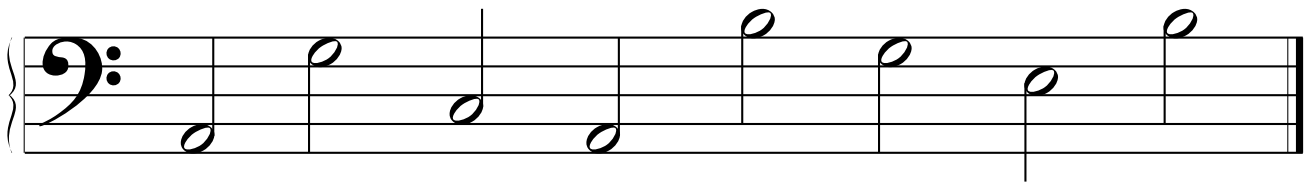
\_\_\_\_\_



\_\_\_\_\_



\_\_\_\_\_



\_\_\_\_\_

# Bass Clef Spaces - 3

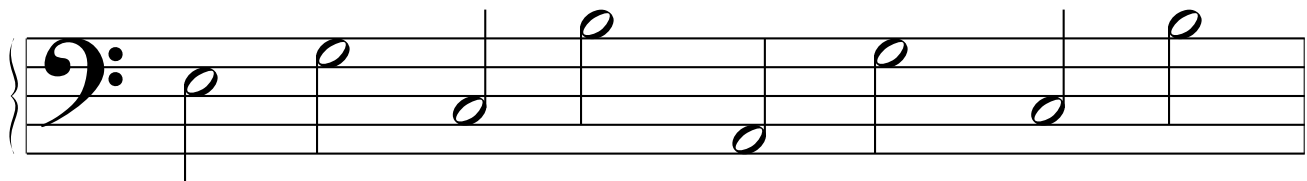
Name \_\_\_\_\_



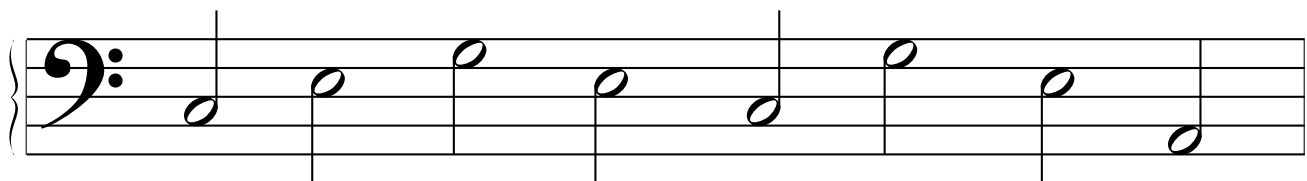
A C E G B



\_\_\_\_\_



\_\_\_\_\_



\_\_\_\_\_



\_\_\_\_\_